
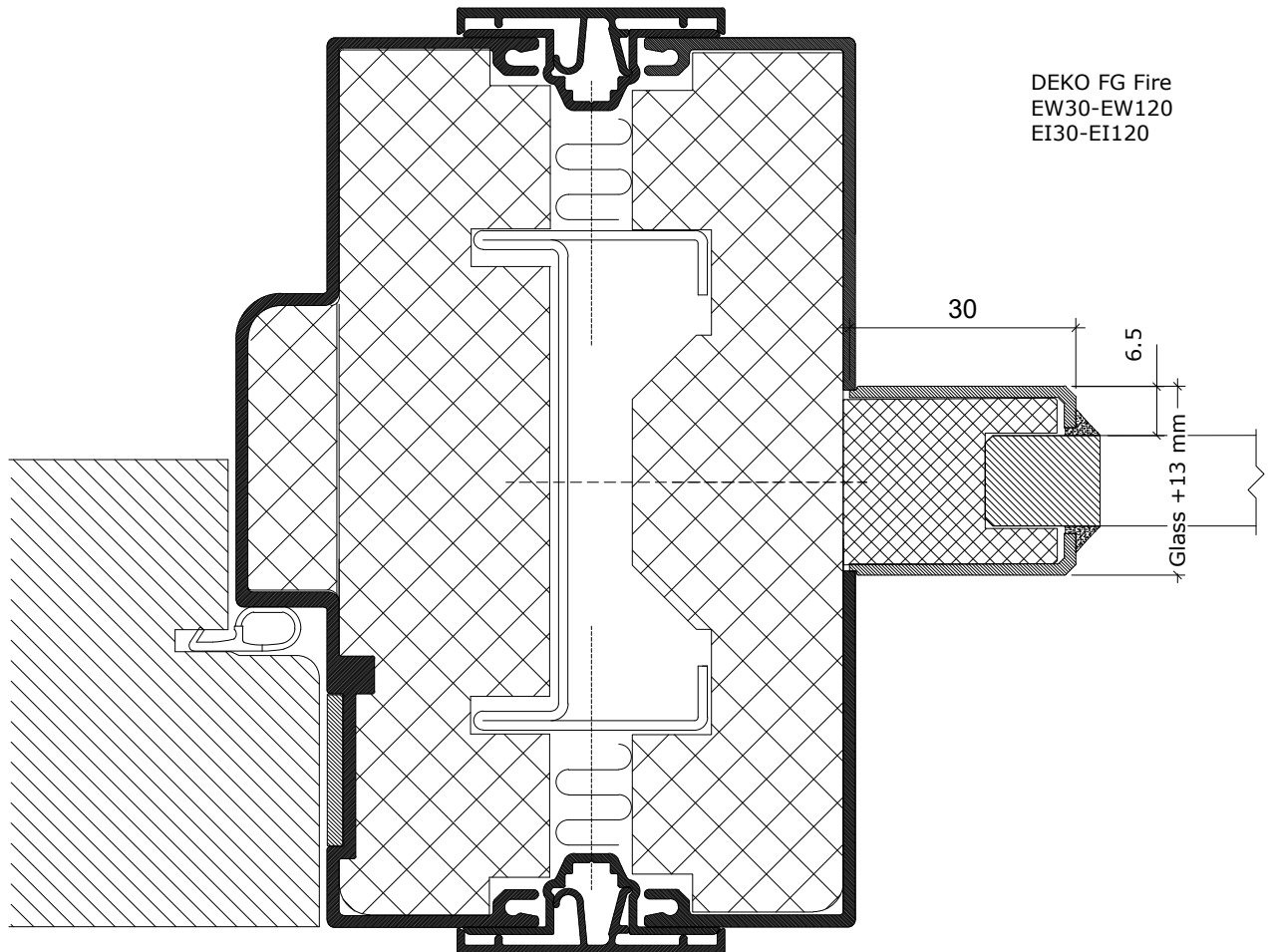


DEKO FG Fire
 EW30-EW120
 EI30-EI120

Door type:
 DEKO TD - Solid wooden door BD30
 DEKO TG - wooden framed glass door BD30


NOTE:
 Glass thickness varies depending on dimensions, fire and sound requirements.
 Possible fire resistance classes depend on the glass connection type - see detail V1 and V3.

	DEKO Tlf./Tel: +45 43 55 77 11 www.deko.dk / www.deko.com	Projekt/Project: DEKO FG Fire Fire resistance classes EW30-EW120; EI30-EI120	
	Sags Nr./Case No.:	Emne/Subject: Door connection of DEKO TD and TG doors Detail V5A	Dato/Date:
Mål/Scale 1:2		Revideret/Revision: 2016-06-08-V01	Signatur Signature EZ



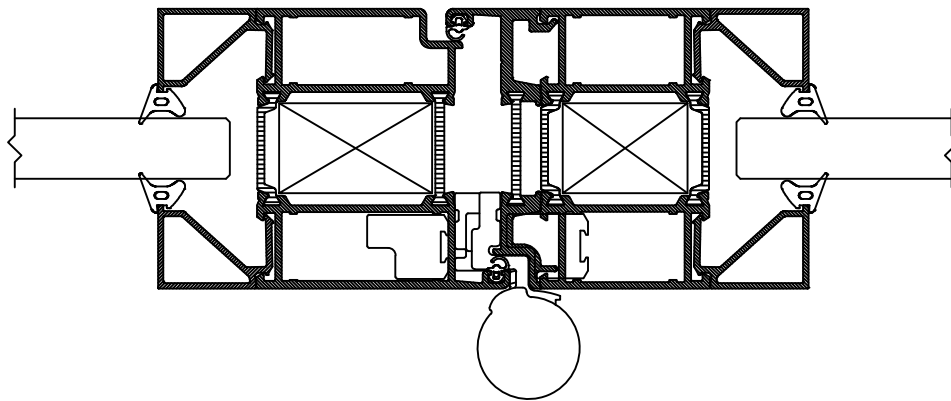
Door type:
 DEKO TD - Solid wooden door BD30/BD60
 DEKO TG - wooden framed glass door BD30/BD60

NOTE:
 Glass thickness varies depending on dimensions, fire and sound requirements.
 Possible fire resistance classes depend on the glass connection type - see detail V1 and V3.

	DEKO Tlf./Tel: +45 43 55 77 11 www.deko.dk / www.deko.com	Projekt/Project: DEKO FG Fire Fire resistance classes EW30-EW120; EI30-EI120	
	Sags Nr./Case No.:	Emne/Subject: Door connection of DEKO TD and TG doors Detail V5B	Dato/Date:
Mål/Scale 1:2		Revideret/Revision: 2016-06-08-V01	Signatur Signature EZ


DEKO FG Fire
 EW30-EW120
 EI30-EI120

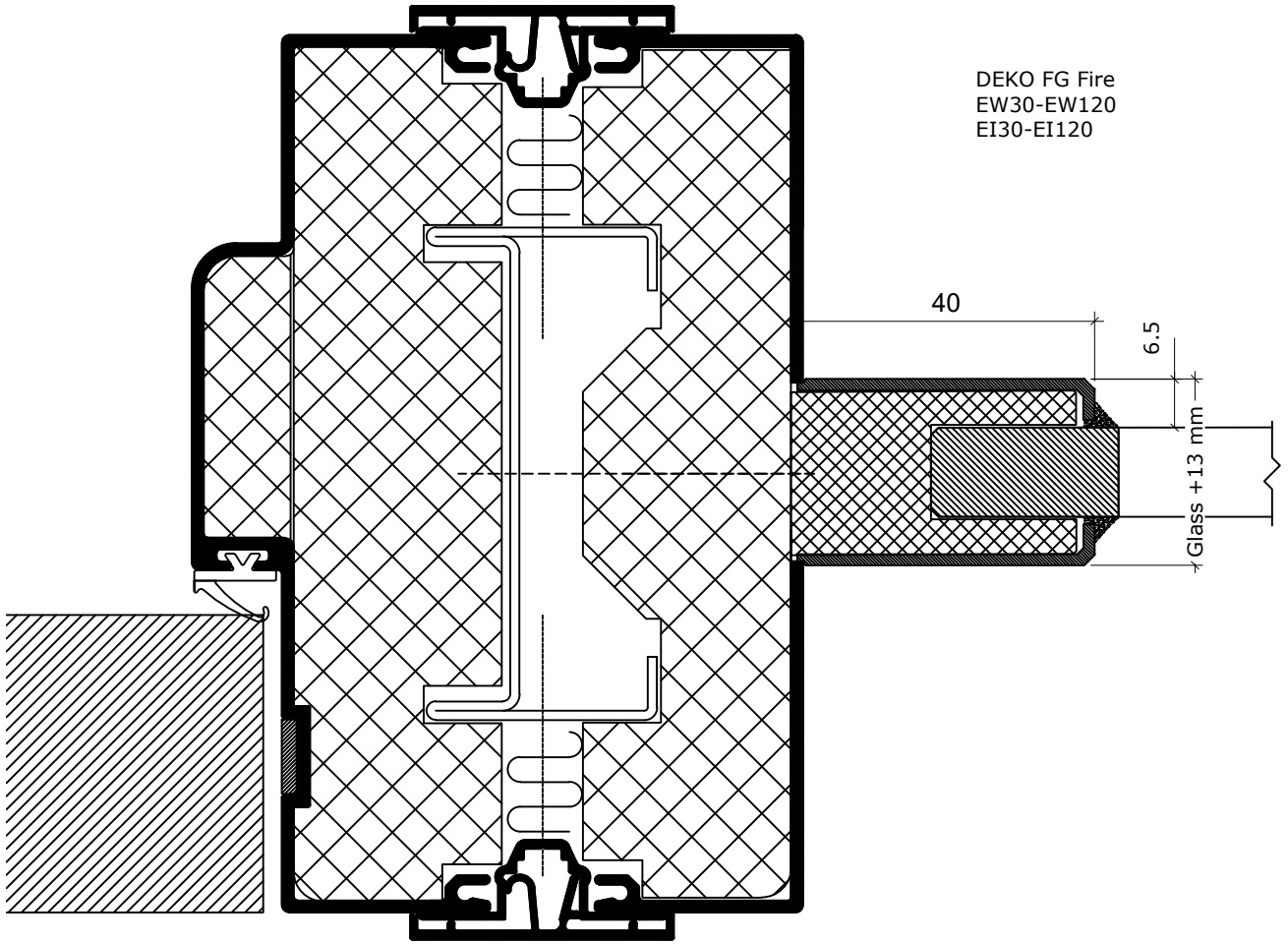
Door type:
 DEKO AG - Aluminium glazed frame door
 EI₂30-C
 EI₂60-C



Hinge type 1


NOTE:
 Glass thickness varies depending on dimensions, fire and sound requirements.
 Possible fire resistance classes depend on the glass connection type - see detail V1 and V3.

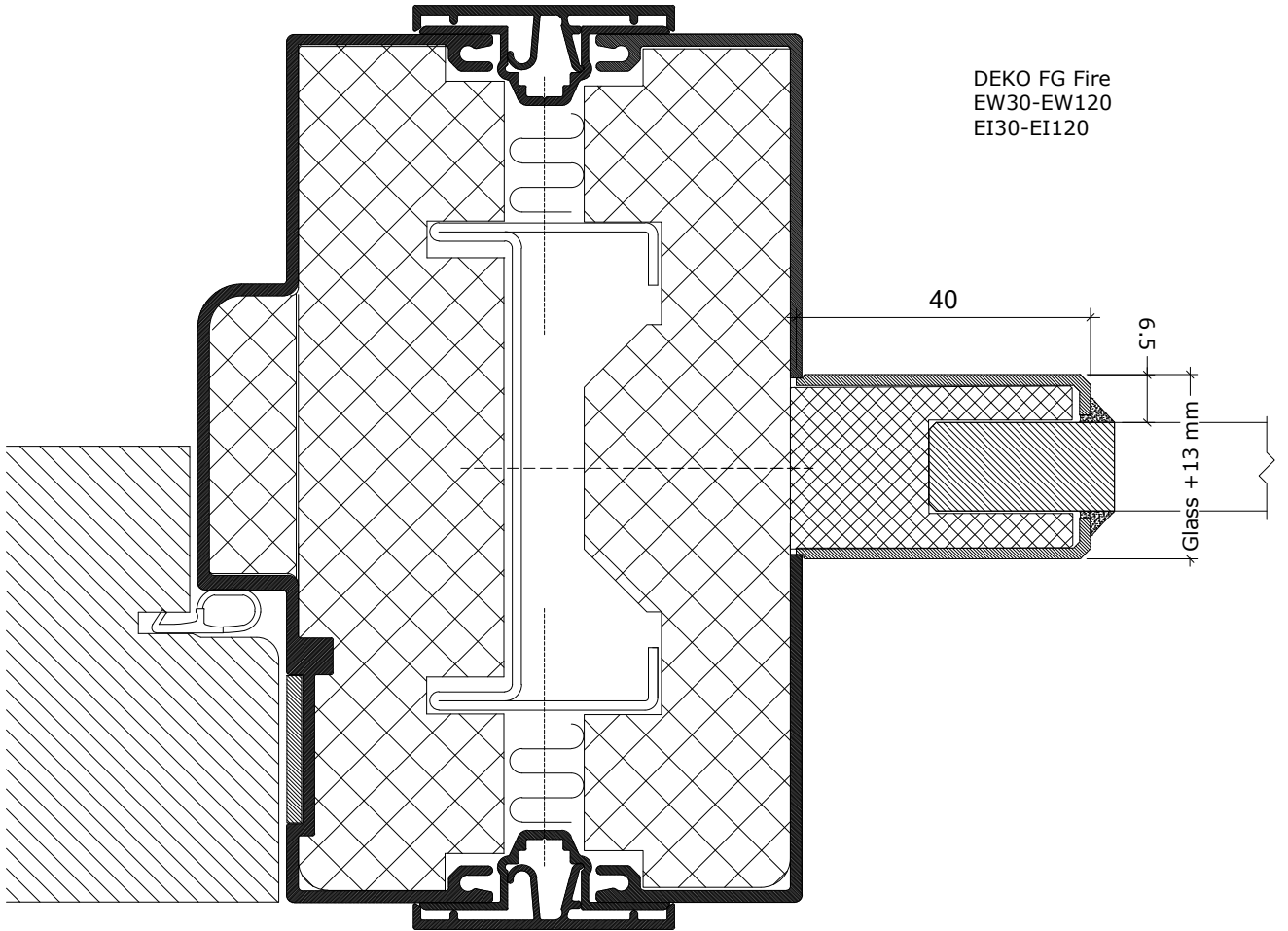
	DEKO Tlf./Tel: +45 43 55 77 11 www.deko.dk / www.deko.com	Projekt/Project: DEKO FG Fire Fire resistance classes EW30-EW120; EI30-EI120	
	Sags Nr./Case No.:	Emne/Subject: Door connection of DEKO AG door Detail V5C	Dato/Date:
Mål/Scale 1:2		Revideret/Revision: 2016-06-08-V01	Signatur Signature EZ



Door type:
 DEKO TD - Solid wooden door BD30
 DEKO TG - wooden framed glass door BD30


NOTE:
 Glass thickness varies depending on dimensions, fire and sound requirements.
 Possible fire resistance classes depend on the glass connection type - see detail V1 and V3.

	DEKO Tlf./Tel: +45 43 55 77 11 www.deko.dk / www.deko.com	Projekt/Project: DEKO FG Fire Fire resistance classes EW30-EW120; EI30-EI120	
	Sags Nr./Case No.:	Emne/Subject: Door connection of DEKO TD and TG doors Detail V5E	Dato/Date:
Mål/Scale 1:2		Revideret/Revision: 2016-06-08-V01	Signatur Signature EZ



Door type:
 DEKO TD - Solid wooden door BD30/BD60
 DEKO TG - wooden framed glass door BD30/BD60

NOTE:
 Glass thickness varies depending on dimensions, fire and sound requirements.
 Possible fire resistance classes depend on the glass connection type - see detail V1 and V3.

	DEKO Tlf./Tel: +45 43 55 77 11 www.deko.dk / www.deko.com	Projekt/Project: DEKO FG Fire Fire resistance classes EW30-EW120; EI30-EI120	
	Sags Nr./Case No.:	Emne/Subject: Door connection of DEKO TD and TG doors Detail V5F	Dato/Date:
Mål/Scale 1:2		Revideret/Revision: 2016-06-08-V01	Signatur Signature EZ